

# Fixture Cut Sheet



## Style: 1175

640 W. Centennial  
Casa Grande, AZ 85222  
Phone: 800-299-7905 Fax: 800-291-0209  
[www.AmeriTecLighting.com](http://www.AmeriTecLighting.com)

Manufactured in the USA in our Casa Grande, AZ facility, this ceramic wall light can be prepared for indoor or outdoor use. The finish shown on this fixture is paintable bisque. In the unpainted condition, scuff marks or other discoloration can be easily removed with a light grade sandpaper or abrasive cloth. Self-finishing information is provided below.

This ceramic light fixture is also available in over 60 stock finishes (view available finishes at [www.AmeriTecLighting.com/finishes.html](http://www.AmeriTecLighting.com/finishes.html)).

#### Finish Shown:

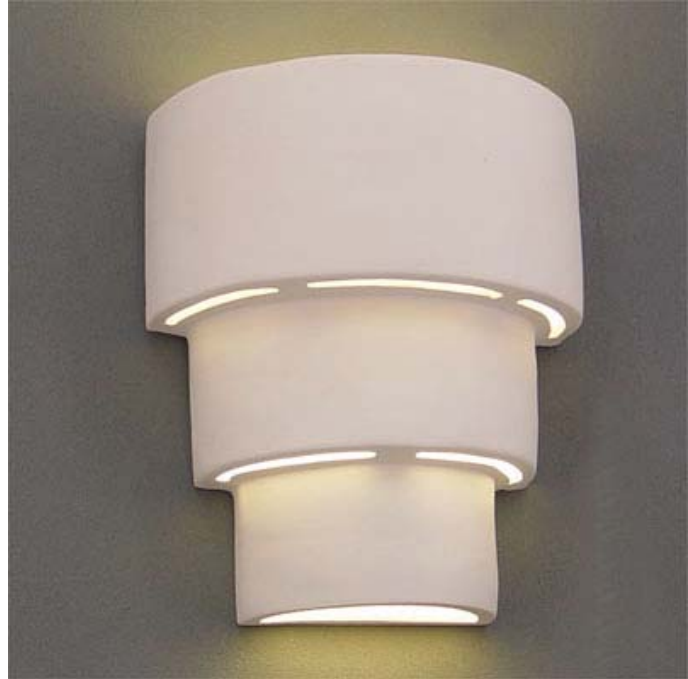
- Paintable Bisque

#### Construction:

- Slip Cast Earthenware Ceramic

#### Notes:

- Paintable
- Can be mounted open up or down
- UL Listed for use in US or Canada
- Comes with mounting hardware and instructions



#### Standard Lamping:

- Quantity: One
- Type: Medium Base A19
- Wattage:
  - Indoor Use: 100W maximum
  - Outdoor Use: 60W maximum

#### Optional Lamping:

- 13W Compact fluorescent

#### Nominal Dimensions:

Height: 14.875"

Width: 12.625"

Depth: 6.5"

#### Self-Finishing Information:

The paintable bisque finish will accept any paint or faux finishing technique currently available. Priming is not generally necessary for latex, acrylic, oil, or spray paint application. Since earthenware ceramic is slightly porous, it will absorb paint being applied, sometimes making a second coat necessary. Earthenware ceramic will also accept wet plaster or stucco, allowing the fixture to be mounted almost seamlessly.